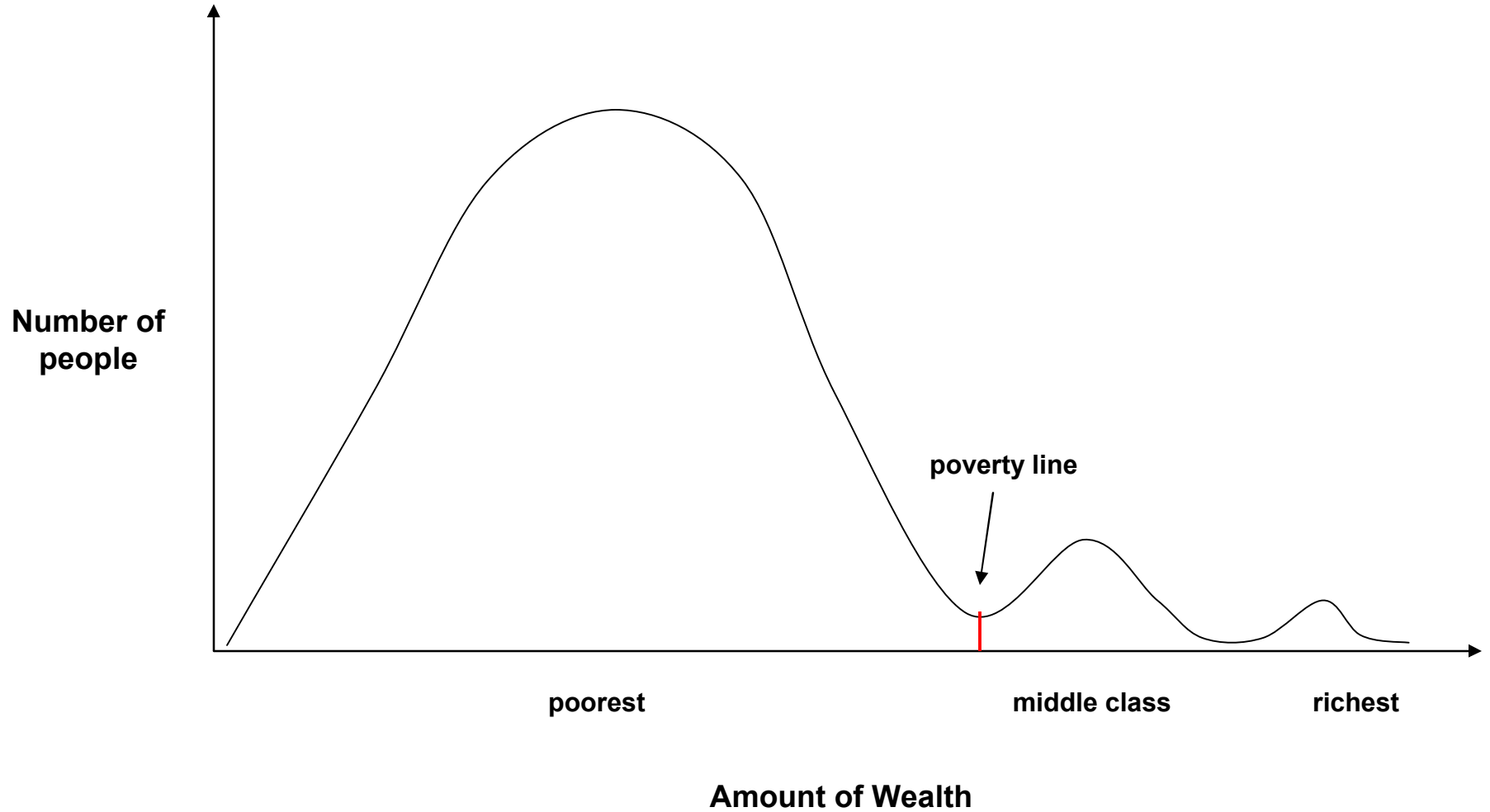


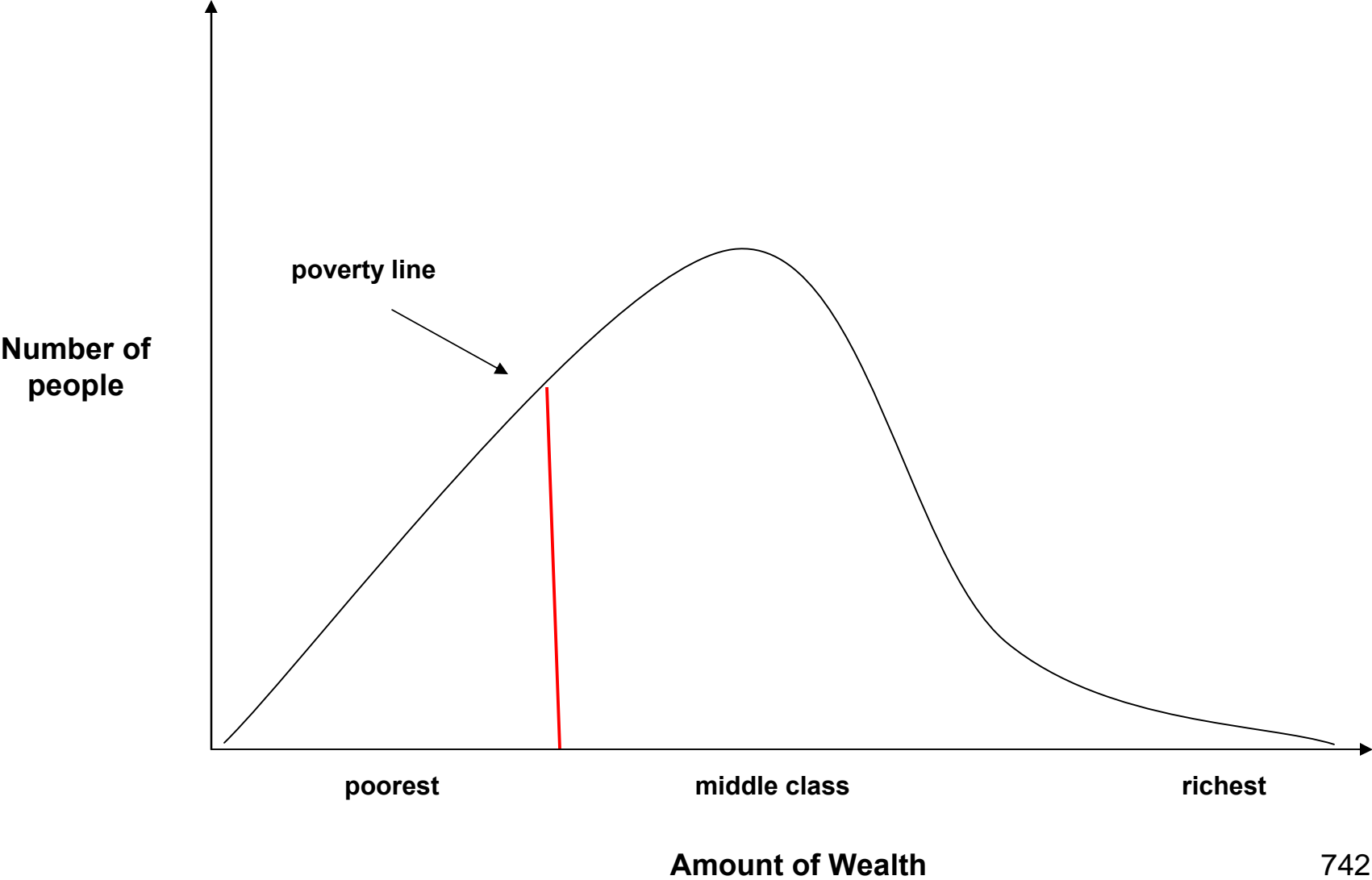
**Figure 12.1 Tri-modal Distribution of Wealth (not to scale)**

**This is the global picture.**



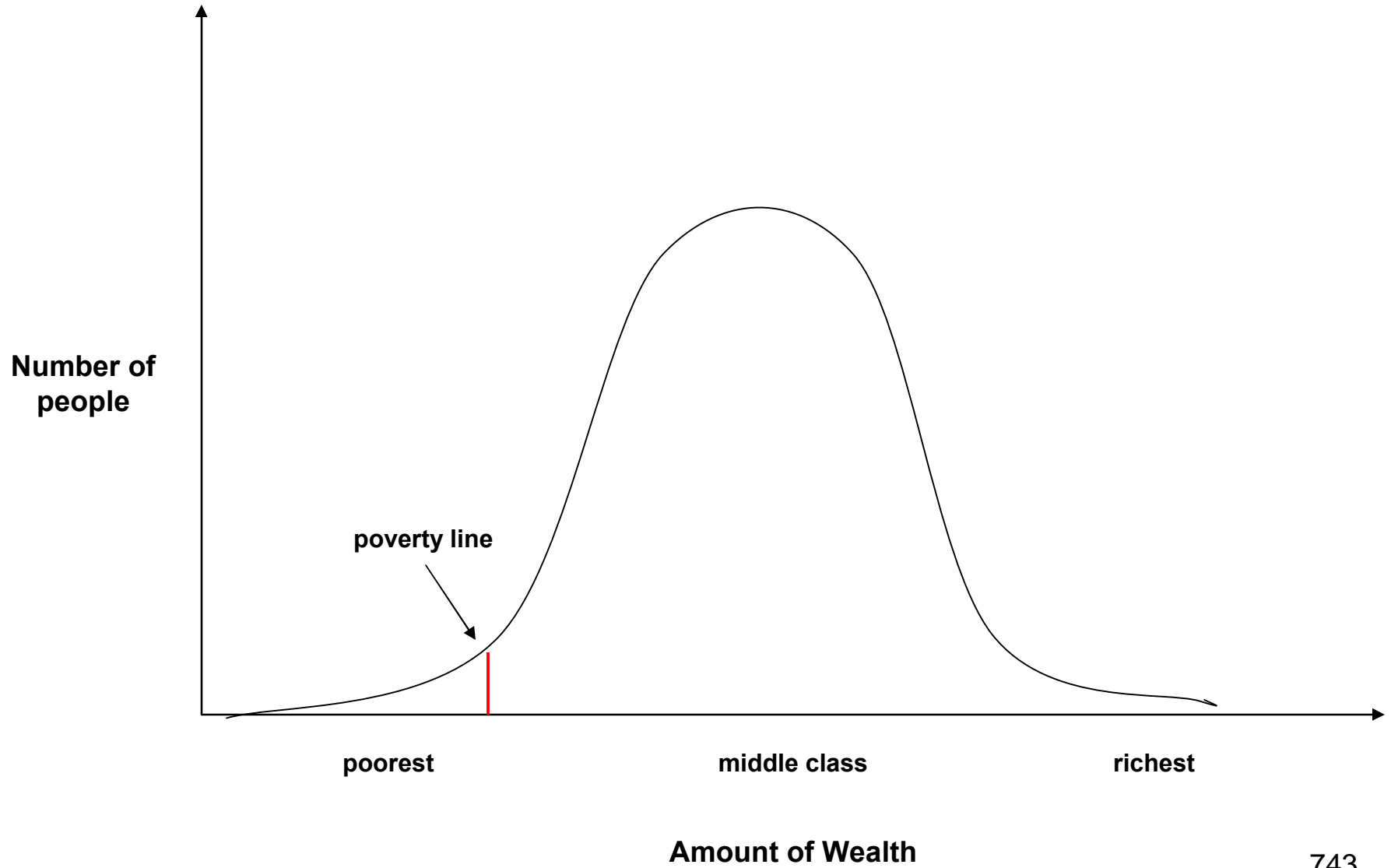
**Figure 12.2 Skewed Normal Distribution of Wealth (not to scale)**

**This is the American picture.**



**Figure 12.3 Normal Distribution of Wealth (not to scale)**

**This is the Canadian, Scandinavian, Japanese and Singaporean picture.**



Group type	Typical number	Typical area (sq. miles)	Optimum Density
ant formicary	1,000,000	0.05	20,000,000
gibbon family	4	0.1	40
baboon troop	40	15	3.35
gorilla troop	17	17	1.0
human band	30	1,000	0.03
wolf pack	10	1,000	0.01

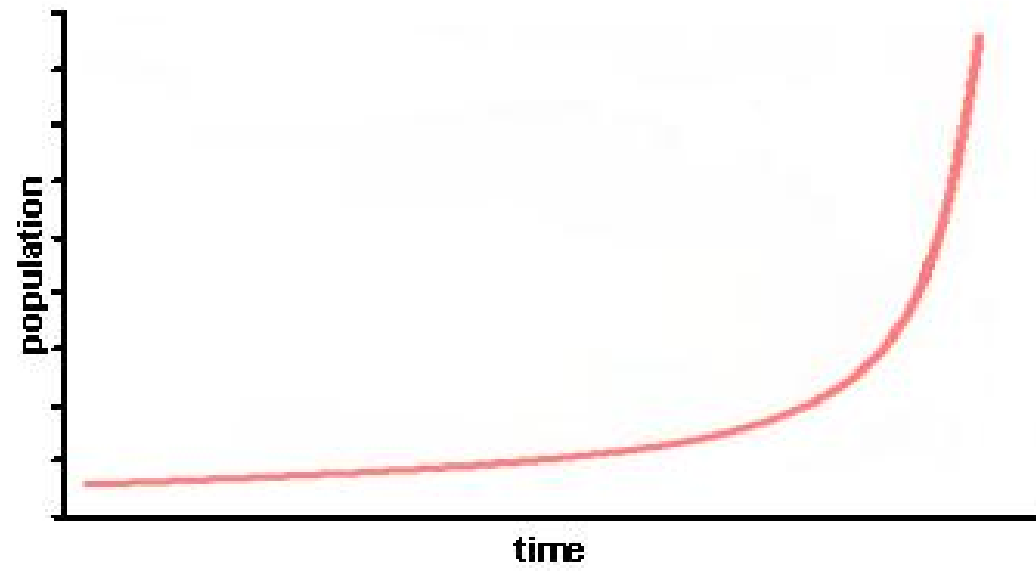
**Figure 12.4 Natural Population Densities**

Microstate	Pop.	Area (sq. mi.)	Population/ Sq. mile
Liechtenstein	34,000	62	548
San Marino	24,000	29	827
Barbados	180,000	166	1,084
Tuvalu	12,000	9	1,333
Malta	400,000	122	3,278

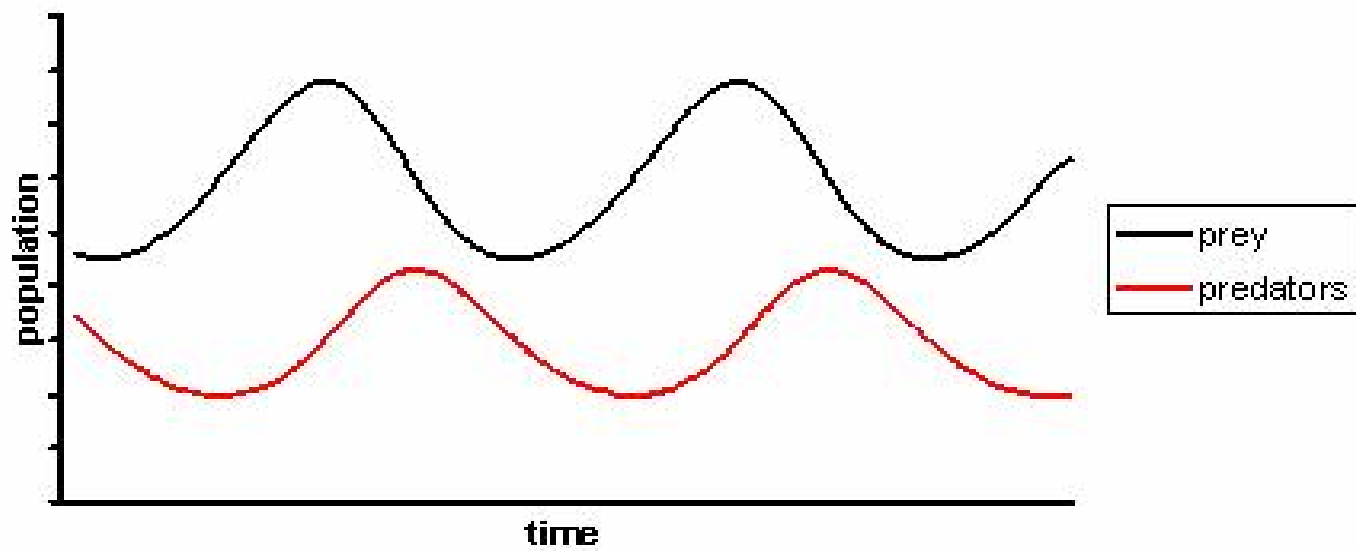
**Figure 12.5 Typical microstate population densities**

Metropolis	Population / sq. mi.
London	10,500
Hong Kong	17,333
New York	25,600
Tokyo	34,132
Mumbai	41,984

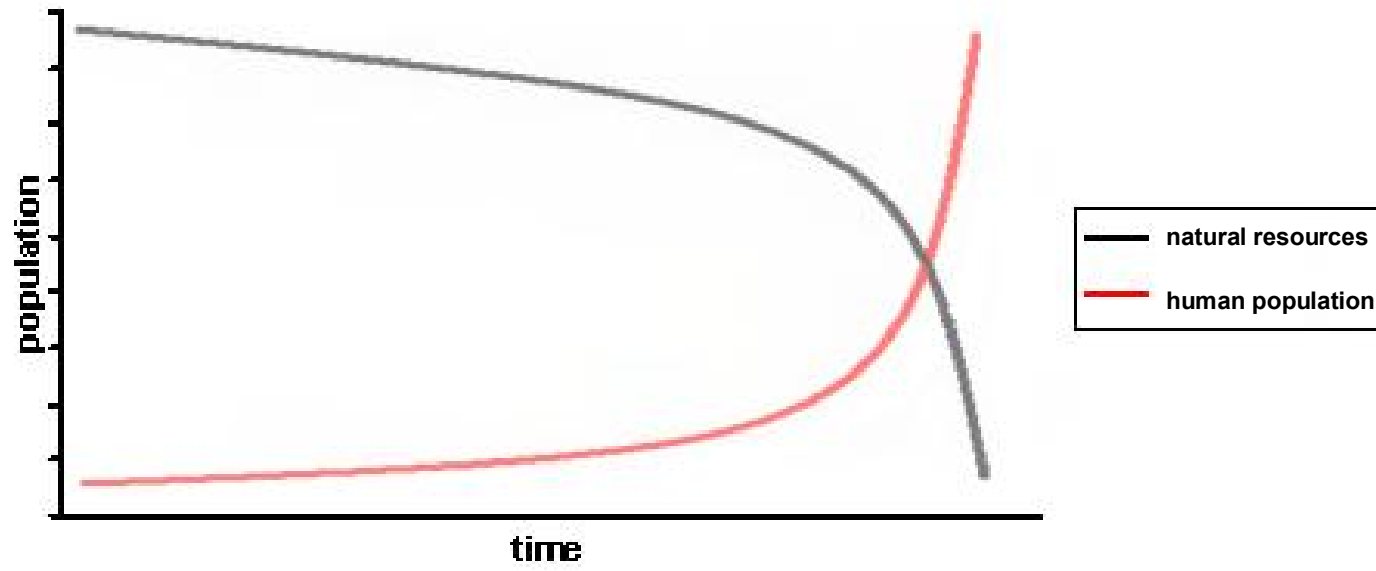
**Figure 12.6 Typical urban population densities**



**Figure 12.7 Human Population Curve**



**Figure 12.8 Predator-Prey population dynamics (Lotka-Volterra equations)**



**Figure 12.9 Over-exploitation and depletion of natural resources**

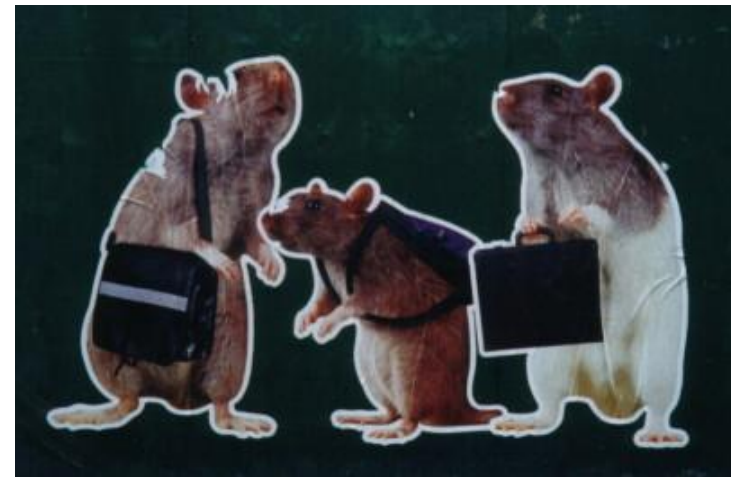


Figure 12.10 The Rat Race

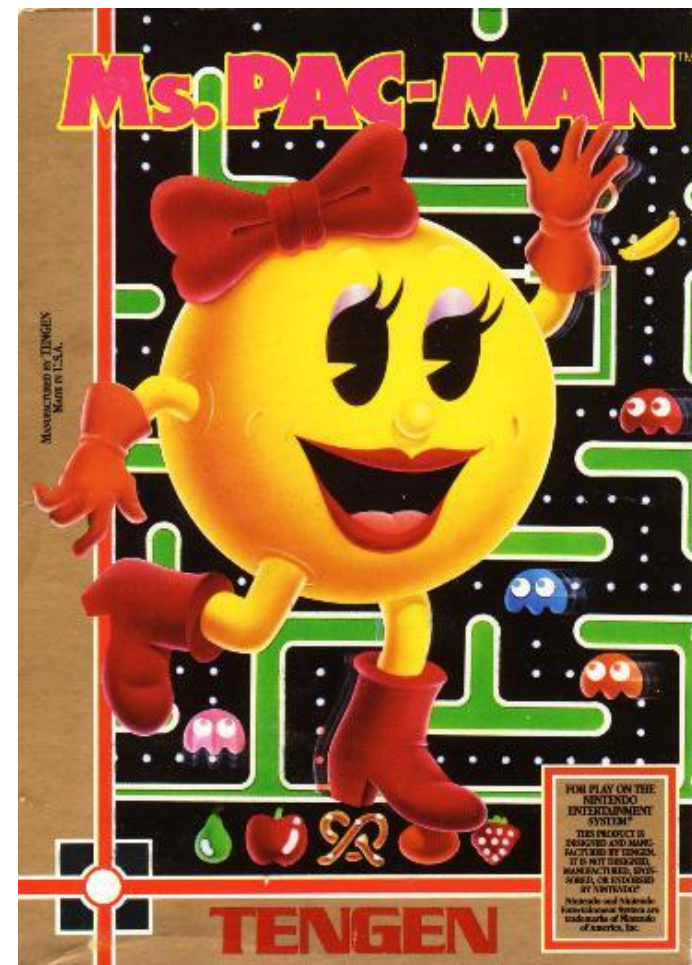
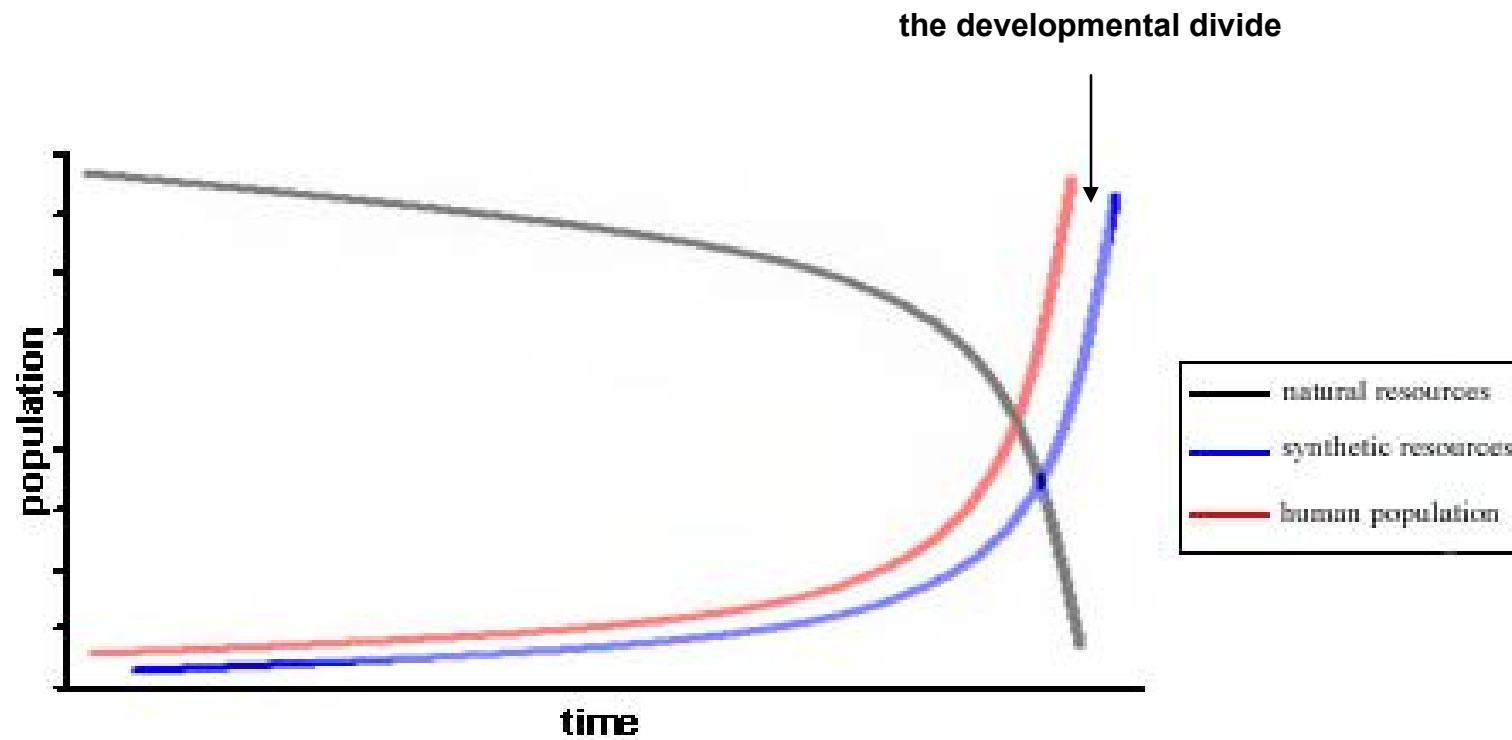
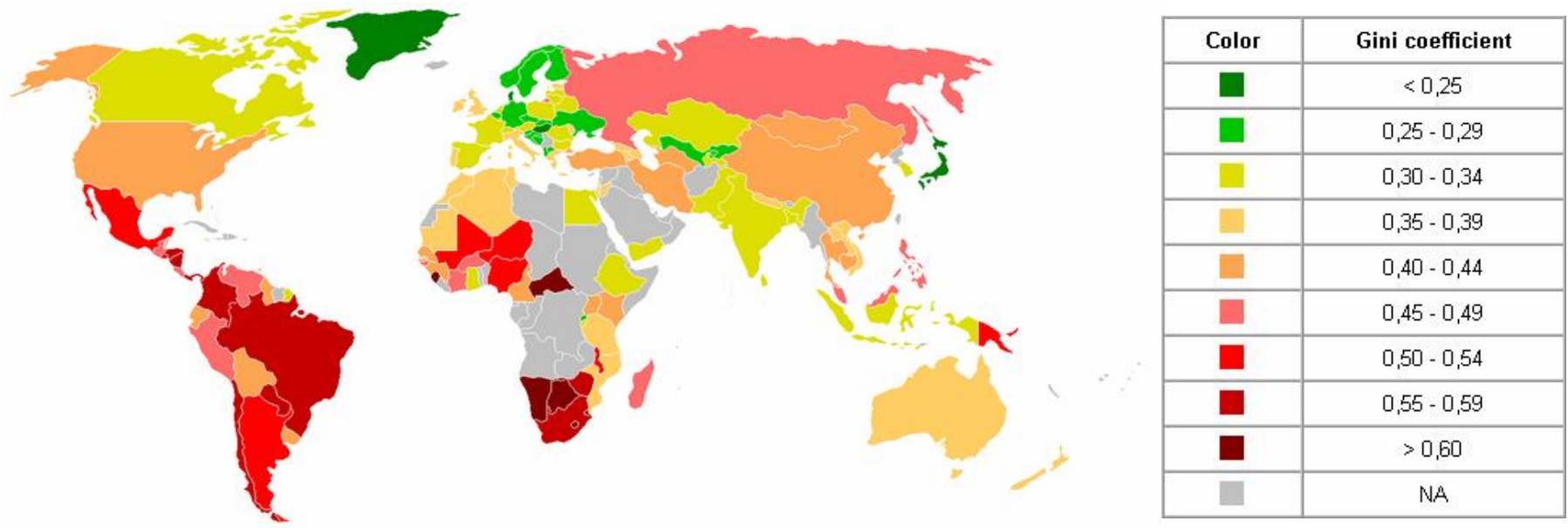


Figure 12.11 The Pac-Man Race (his & hers)



**Figure 12.12** The replacement of natural resources by synthetic ones, and the developmental divide.



**Figure 12.13 Gini Coefficients, world-wide**